



CARLISLE
BRANSON
FUNERAL SERVICE & CREMATORY



Service Selections

A guide of our service packages, merchandise and memorial items

CarlisleBranson.com

About Our Guide

The selection of service packages, merchandise and memorial items is a personal choice. Your choices should reflect the loved one you have lost while considering your personal budget needs. We have created this guide to help you select a customized funeral that will provide a special memorial for your loved one.

Please ask if you have any questions or concerns about our services or this guide. We are here to serve you in your time of need

Funeral Payment Options

Because we have an obligation to the community to see that our business continues to operate in a fiscally responsible manner, and to ensure that our prices remain reasonable and affordable, we offer the following payment options.

Unless the funeral bill is being paid with an existing prepaid trust or a verifiable insurance assignment, payment is expected prior to services being rendered.

Prepaid Funeral Trust or Insurance Trust: If the services have been prepaid either at Carlisle-Branson Funeral Service & Crematory or at another funeral establishment, no payment is expected. If additional items are requested at the time services are rendered, a 30-day grace period is extended.

Insurance Assignment: Our staff is happy to assist you with any life insurance claims that need to be made. Oftentimes, the insurance company will honor an assignment, whereby the funeral bill is paid out of insurance funds. We use a third party funding company that charges a 4% processing fee based on the total of the contract.

Cash or Check: Cash, personal checks or cashier checks are acceptable forms of payment. There will be a \$25.00 charge for any returned checks.

Credit Card Payment: We accept Master Card, Visa, Discover and American Express as acceptable forms of payment.

Third Party Financing: We will be happy to refer various third party finance companies to assist with a funeral bill. Because we are not regulated like the banking industry, we cannot establish credit terms and arrange for payment plans.



General Price List

The goods and services shown below are those we can provide to our customers. You may choose only the items you desire. However, any funeral arrangements you select will include a charge for our basic services and overhead. If legal or other requirements mean you must buy any items you did not specifically ask for, we will explain the reason in writing on the statement we provide describing the funeral goods and services you selected. These prices are effective as of February 10, 2025, but thereafter are subject to change without notice.

Basic Services of Funeral Director and Staff: \$2,895

Our fee for the basic services of the funeral director and staff includes, but is not limited to: staff to respond to initial request for service; arrangement conference with family and responsible parties; arrangement of funeral; preparation and filing of necessary authorizations and permits; recording vital statistics; preparation and placement of obituary notices; and coordination with those providing other portions of the funeral, e.g., cemetery, crematory, vault companies and others as required. This fee for our basic services will be added to the total cost of the funeral arrangements you select. (This fee is already included in our charges for direct cremations, immediate burials, and forwarding or receiving of remains.)

Embalming: \$1,295

Embalming is not required by law. Embalming may be necessary, however, if you select certain funeral arrangements, such as a funeral with viewing. If you do not want embalming, you usually have the right to choose an arrangement that does not require you to pay for it, such as direct cremation or immediate burial.

Other Preparation of the Body

Casketing, Dressing and Cosmetizing: \$295

Reconstruction Restoration (Donor Cases, Autopsies, Severe Trauma Cases):. \$75 per hour

Bathing/Sanitation of Remains when Embalming is not chosen: \$200

Refrigeration and Shelter of Remains after 5 Days: \$200 per day

Use of Facilities and Staff for Viewing: \$500

Visitation at the Funeral Chapel: Our services will include visitation set up, use of visitation room, placement of encased remains, display of floral arrangements, supervision and attendance during visitation.

One Day Visitation: \$500 or Up to Two hours Visitation Prior to Service (Same Day): \$500

Visitation at Another Facility: *Our services will include local transportation of encased remains, visitation set up, placement of encased remains, display of floral arrangements, supervision and attendance during visitation.*



General Price List

Use of Facilities and Staff for Funeral Service

Funeral Service at the Funeral Chapel: \$500

Our services include coordinating the funeral arrangements, supervision of the funeral, staff to tend to the funeral ceremony, supervision of the committal or other disposition service, set up of facilities for the funeral ceremony, equipment and additional staff necessary to conduct the funeral ceremony.

Funeral Service at Another Location: \$500

Our services include coordinating the funeral arrangements, supervision of the funeral, staff to tend to the funeral ceremony, supervision of the committal or other disposition service, set up of facilities for the funeral ceremony, equipment and additional staff necessary to conduct the funeral ceremony at another location.

Use of Facilities and Staff for Memorial Service

Memorial Service at Funeral Chapel: \$700

Our services include coordinating the memorial service, supervision of the memorial service, and additional staff necessary to conduct the memorial service.

Memorial Service at Another Location: \$700

Our services include coordinating the memorial service, supervision of the memorial service, and additional staff necessary to conduct the memorial service at another facility.

Use of Equipment and Staff for Graveside Service

Graveside Service: \$500

Our services include coordinating the funeral arrangement at the graveside, supervision of the graveside service, equipment and staff necessary to conduct the graveside service.

Automotive Equipment

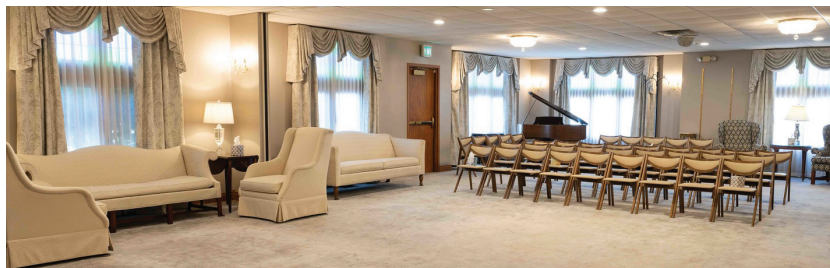
Transportation within a 25-mile radius from Carlisle-Branson Funeral Service & Crematory is included with the following automotive services. Add an additional \$1.75 for each mile outside of 25- mile local radius.

Transfer of Remains to Funeral Home: \$505

Limousine (7 passengers):. \$300

Hearse: \$505

Flower Car: \$150



General Price List

Minimum Care Services

Forwarding of Remains to Another Funeral Firm: \$4,195

This charge includes basic services of the funeral director and staff, removal of the remains to the funeral chapel, embalming and local transportation to the airport. This charge does not include visitation, rites or ceremonies prior to the forwarding of the remains.

Receiving Remains from Another Funeral Firm: \$3,795

This charge includes basics services of the funeral director and staff, removal of the remains to the funeral chapel, alternative care and custody of the remains, and local transportation to the cemetery. This charge does not include visitation, rites or ceremonies.

Immediate Burial: From \$3,395 to \$9,990

Immediate Burial with Casket Provided by Purchaser: \$3,395

This charge for immediate burial includes basic services of the funeral director and staff, removal of the remains to the funeral chapel, washing and disinfection of unembalmed remains and local transportation to the cemetery. This charge DOES NOT include the use of facilities and staff for any visitation or ceremony, public or private, prior to burial.

Immediate Burial with Cloth Covered Casket Selected from Our Funeral Chapel: \$4,690

Immediate Burial with Casket Selected from Our Funeral Chapel: \$3,395
The cost of the casket is additional.

Direct Cremation: From \$3,195 to \$9,790

This charge for a direct cremation includes basic services of the funeral director and staff, removal of the remains to the funeral chapel, washing and disinfection of unembalmed remains and includes the crematory fee but excludes the use of facilities and staff for any visitation or ceremony, public or private, prior to the cremation. If you want to arrange for a direct cremation you can use an alternative container. Alternative containers encase the body and can be made of materials like fiberboard or composition materials (with or without an outside covering). The containers we provide are fiberboard boxes.

Direct Cremation with Container Provided by the Purchaser: \$3,195

Direct Cremation with Fiberboard Box: \$3,395

Direct Cremation with Casket Selected from Our Funeral Chapel: \$3,395

The cost of the casket is additional.



Merchandise & Other Fees

Memorial Accessories and Packages

Life Celebration Package:	\$625
Basic Package:	\$350
Includes Register Book, Memorial Folders and Acknowledgment Cards	
Acknowledgment Cards (per 50):	From \$75
Memorial Folders (per 50):	\$100
Register Books:	From \$75
Life Tribute DVDs:	\$25
Life Tribute USB:	\$30
Prayer Cards (per 100):	\$100
Parting Stone	\$2,195
Crematory Fee:	\$500
Police Escort (2 motorcycles):	\$300
Final Date on Stone:	\$225
Clergy (suggested honorarium):	From \$250
Celebrant:	\$500
Weekend/Holiday Charges:	\$250/Day

Transportation of Remains

Air Tray:	\$300
Shipping container for casketed remains	
Minimum Shipping Container:	\$300
For non-casketed remains	
Certified Mailing of Cremated Remains in the USA:	\$200



Funeral Package Selections

Package A: Complete Funeral Service With Limousine: \$6,795

This selection includes basic services of the funeral director and staff; transfer of the remains to the funeral chapel within 25 miles; embalming, cosmetizing, dressing and casketing of the remains; use of facilities for an evening visitation; use of facilities for the funeral ceremony or funeral ceremony in another facility; hearse; flower car; 7 passenger limousine and committal or other disposition service.

Package B: Complete Funeral Service Without Limousine: \$6,495

This selection includes basic services of the funeral director and staff; transfer of the remains to the funeral chapel within 25 miles; embalming, cosmetizing, dressing and casketing of the remains; use of facilities for an evening visitation; use of facilities for the funeral ceremony or funeral ceremony in another facility; hearse; flower car; and committal or other disposition service.

Package C: Complete One Day Funeral Service: \$6,495

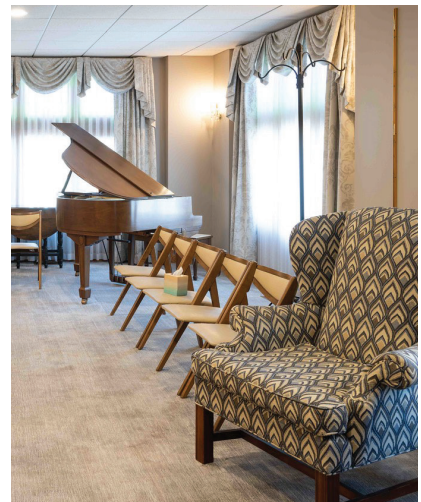
This selection includes basic services of the funeral director and staff; transfer of the remains to the funeral chapel within 25 miles; embalming, cosmetizing, dressing and casketing of the remains; use of facilities for up to 2 hours of visitation; use of facilities for the funeral ceremony or funeral ceremony in another facility; hearse; flower car; and committal or other disposition service.

Package D: Graveside Service with Evening Visitation: \$6,295

This selection includes basic services of the funeral director and staff; transfer of the remains to the funeral chapel within 25 miles; embalming, cosmetizing, dressing and casketing of the remains; use of facilities for an evening visitation; hearse; flower car; and graveside service.

Package E: Graveside Services Only: \$5,495

This selection includes basic services of the funeral director and staff; transfer of the remains to the funeral chapel within 25 miles; embalming, cosmetizing, dressing and casketing of the remains; alternative care and custody of the remains; hearse; flower car and graveside service.



Cremation

The Branson Cremation Standards of Excellence

Your Loved One Never Leaves Our Care

Many other funeral homes hire third-party crematories, typically located in a warehouse district. These funeral homes transfer your loved one to outside cremation services, making it impossible for the funeral home to manage and supervise the cremation.

We have our own crematory, so all your services are handled and managed by our licensed staff and your loved one never leaves our care.

Safeguarding Personal Identity

To ensure security, a personal identification band is placed on your loved one at the moment your loved one is transferred to our care.

Tracking System

Your loved one is registered into our tracking system and assigned an identification number which is stamped into a stainless steel identification tag. This number is used to track every phase of the cremation process.

Personal belongings are cataloged and placed in a secure area for their return to the family.



Saying Good Bye

We will dress your loved one in the clothes provided by the family or in a gown we provide. Then we will privately provide an opportunity to view your loved one prior to cremation.

Cremation Assurance Process

Checks and Balances

Our licensed crematory operator will review all cremation paperwork. This is to ensure authorizations have been received and have been properly documented. Our crematory registry is dated and initialed by the certified operator before and after the cremation. The stainless steel identification tags are placed on the outside of the cremation chamber during the cremation process.

Once all documentation is verified, our licensed operator will proceed with the cremation.

After The Cremation

After the cremation is complete, the cremated remains are placed in the urn selected with the stainless steel identification tag.

Honoring Your Loved One

We always treat families like our own. We will assist you in planning a meaningful ceremony either before or after the cremation, which will provide an opportunity for family and friends to pay tribute to your loved one and to share the memories of a lifetime.

Receiving Cremated Remains. Final Disposition. Memorialization

Our Licensed Staff are specially trained to assist you with memorialization options and an appropriate placement for family, friends, and future generations to pay their respects. If no memorialization has been selected, our staff will schedule a time for receipt of the cremated remains and provide a dignified setting, in which to receive the urn, where you may spend a few moments, privately, in quiet reflection.

Caskets

Carlisle-Branson Funeral Service & Crematory , 39 East High Street, Mooresville, IN 46158 • (317) 831-2080
Casket Price List These prices are effective as of February 10, 2025, but are subject to change without notice.

Casket	Description	Price
Diplomat	Solid Walnut Exterior, Almond Velvet Interior	\$6,595
Princeton	Solid Copper Exterior, Champagne Velvet Interior	\$6,195
Hyacinth Princess	Stainless Steel Exterior, Pink Velvet Interior	\$4,195
Onyx	Stainless Steel Exterior, Silver Velvet	\$4,195
Sanctuary	Interior Stainless Steel Exterior, Blue Velvet Interior	\$4,195
Mansfield Platinum	Stainless Steel Exterior, White Velvet Interior	\$4,195
Woodstock	Solid Oak Exterior, Almond Velvet Interior	\$4,195
Gatewood	Solid Cherry Exterior, Ivory Velvet Interior	\$3,995
Buxton 27"	Solid Oak Exterior, Ivory Basketweave Interior	\$3,995
Kinross	Solid Maple Exterior, Almond Velvet Interior	\$3,795
Barnwood	Solid Oak Exterior, Natural Cotton Interior	\$3,695
Virginia Rose	Solid Maple Exterior, Pink Linwood Interior	\$3,595
Clearwood	Solid Maple Exterior, Pink or Rosetan Crepe Interior	\$3,595
Sebring	Solid Pecan Exterior, White Brocade Interior	\$3,495
Provincial	Solid Pecan Exterior, Rosetan Crepe Interior	\$3,495
Lincoln	Solid Pecan Exterior, Rosetan or Blue Crepe Interior	\$3,495
Springfield	18 Gauge Steel Exterior, Arbutus Silver Velvet Interior	\$3,495
White Sand	18 Gauge Steel Exterior, Rosetan Crepe Interior	\$3,395
Midnight Blue	18 Gauge Steel Exterior, Rosetan Crepe Interior	\$3,395
Hunter Green	18 Gauge Steel Exterior, Rosetan Crepe Interior	\$3,395
Cardinal	18 Gauge Steel Exterior, Cream Basketweave Interior	\$3,395
Dakota 27"	Solid Poplar Exterior, Khaki Basketweave Interior	\$3,395
Coral Mist	18 Gauge Steel Exterior, Pink Crepe Interior	\$3,295
Pierce Cashmere	18 Gauge Steel Exterior, Ivory Basketweave Interior	\$3,195
23rd Psalm	Solid Poplar Exterior, Khaki Basketweave Interior	\$3,195
Fredrick	Solid Poplar Exterior, Ivory Basketweave Interior	\$3,195
Harris	Solid Poplar Exterior, Bamboo Weave Interior	\$3,195

Caskets

Conventional Collection

Casket	Description	Price
Patriot	18 Gauge Steel Exterior, Black Twill Interior	\$3,195
Washington	Solid Poplar Exterior, Ivory Basketweave Interior	\$2,995
Ridgefield 28"	18 Gauge Steel Exterior, Silver Crepe Interior	\$2,995
Viscount	Poplar Exterior, Rosetan Crepe Interior	\$2,995
Ridgefield 27"	18 Gauge Steel Exterior, White Crepe Interior	\$2,795
Sterling	18 Gauge Steel Exterior, Blue Crepe Interior	\$2,795
McKinley 28"	20 Gauge Steel Exterior, Rosetan Crepe Interior	\$2,495
Fiberboard Cloth Exterior	Cloth Covered, White Crepe Interior	\$1,295

Cremation Caskets

Longley Cherry	Poplar Veneer Exterior, Medium Wood, Rosetan Crepe Interior	\$1,995
----------------	---	---------

Rental Caskets

Cherry	Cherry Finish Exterior, Rosetan Velvet Interior	\$1,395
Oak	Oak Finish Exterior, Rosetan Crepe Interior	\$1,195

Alternative Cremation Containers

Standard Alternative Container	\$500
Trayview Alternative Container	\$400
Minimum Alternative Container (Cardboard)	\$200

Disclaimer of Warranties: Carlisle-Branson Funeral Service & Crematory makes no representations or warranties regarding the caskets listed above. The only warranties, expressed or implied, granted in connection with caskets sold are the express written warranties, if any, extended by the manufacturers thereof. Carlisle-Branson Funeral Service & Crematory hereby expressly disclaims all warranties, expressed or implied, relating to the caskets, including, but not limited to the implied warranties of merchantability and fitness for a particular purpose.

Outer Burial Containers

Carlisle-Branson Funeral Service & Crematory , 39 East High Street, Mooresville, IN 46158 • (317) 831-2080
Outer Container Price List These prices are effective as of February 10, 2025, but are subject to change without notice.

Setting and Closure Charge:	\$500
Holiday Charge:	\$850
Additional Charges: Saturday Charge: \$200/ Sunday Charge: \$400/ After 4:00 p.m.: \$200	
Grave Set Up When No Vault is Purchased:	\$500

Outer Burial Containers

Conventional Collection

Wilbert Bronze	17 Gauge Bronze Cover Overlay	\$18,995
Triple-reinforced burial vault: cover and base reinforced with bronze alloy, interior reinforced with high-impact plastic, exterior base encased in high-impact plastic; personalization included; 100-year warranty		
Wilbert Bronze Triune	26 Gauge, 14 Ounce Bronze Base and Cover Liner	\$5,495
Double-reinforced burial vault: high-strength concrete with bronze and high-impact plastic, cover and base reinforced with non-rusting bronze; personalization included; 75-year warranty		
Wilbert Copper Triune	26 Gauge, 14 Ounce Copper Base and Cover Liner	\$4,995
Double-reinforced burial vault: high-strength concrete with copper and high-impact plastic, cover and base reinforced with non-rusting copper; personalization included; 75-year warranty		
Wilbert Stainless Steel Triune	26 Gauge, 14 Ounce Stainless Steel Base and Cover Liner	\$3,695
Double-reinforced burial vault with corrosion-resistant stainless steel and high-impact plastic; personalization included; 75-year warranty		
Wilbert Cameo Rose	26 Gauge, 14 Ounce Stainless Steel Base and Cover Liner	\$3,695
Double-reinforced burial vault with corrosion-resistant stainless steel and high-impact plastic; pink and white decorative paint coloring; personalization included; 75-year warranty		
Wilbert Veteran	26 Gauge, 14 Ounce Stainless Steel Base and Cover Liner	\$3,695
Double-reinforced burial vault with corrosion-resistant stainless steel and high-impact plastic; two-tone paint coloring; service branch emblem; personalization included; 75-year warranty		
Wilbert Venetian	Concrete and High-Impact Plastic	\$2,495
Single-reinforced burial vault with high-strength concrete and high-impact plastic; mimics the look of polished marble; personalization included; 65-year warranty		
Wilbert Continental	Concrete and Plastic	\$1,895
Single-reinforced burial vault with durable concrete exterior and plastic-reinforced cover and base; 55-year warranty		
Wilbert Monticello	Concrete and Plastic	\$1,695
Single-reinforced burial vault with a concrete exterior and plastic-reinforced cover and base; 50-year warranty		
Grave Liner	Quality Steel Reinforced Concrete Box	\$1,395
Drain holes		

Urn Vaults

Monticello Urn Vault	Concrete and Plastic	\$595
Single-reinforced burial vault with a concrete exterior and plastic-reinforced cover and base; 50-year warranty		

Disclaimer of Warranties: In most areas of the country, state or local law does not require that you buy a container to surround the casket in the grave. However, many cemeteries require that you have such a container so that the grave will not sink in. Either a grave liner or a burial vault will satisfy these requirements. Vaults are designed to resist the entrance of outside elements such as water, air, dirt or other elements.



CARLISLE BRANSON

FUNERAL SERVICE & CREMATORY

About Carlisle-Branson Funeral Service & Crematory

Carlisle-Branson Funeral Service & Crematory has served the surrounding communities since 1895. Frank Carlisle began in funeral service by purchasing an interest in the J.H. Rusie Furniture and Undertaking business.

In 1895, with partner Daniel Gilbert, Frank purchased a storefront in downtown Mooresville. After one year, he purchased Gilbert's interest and began conducting business under his own name.

Frank's son, Milford Carlisle, joined the business in 1929 shortly after his father's death. In 1949, the funeral home moved to its present location of 39 East High Street. In 1952, after his service in the Marine Corps during the Korean War, Milford's son, George Carlisle, joined the firm. George's son, Samuel Carlisle, joined the firm in 1988 after graduation from Ball State University and Mid America College of Mortuary Science.

Sam owned Carlisle & Son Funeral Chapel until 2007, when he sold the business to Chris and Mary Beth Branson. In 2010, the Bransons added an on-site crematory to better serve families close to home. In 2011, the Carlisle and Branson names merged to create Carlisle-Branson Funeral Service & Crematory.

Chris and Mary Beth find pride and privilege in providing personalized care to the families they serve. The Bransons are honored to be a part of the Mooresville community, and actively participate with organizations such as the Mooresville Senior Center, Mooresville Kiwanis Club, Mooresville Lions Club, Mooresville Masonic Lodge #78, St. Thomas More Knights of Columbus, St. Thomas More Catholic Church, United Way of Morgan County and the Morgan County Coalition for Literacy.



**Chris and Mary Beth
Branson**

39 East High Street • Mooresville, IN 46158
p (317) 831-2080 • f (317) 834-2080

CarlisleBranson.com